



Accessing Algebra 1 and Geometry Readiness Courses

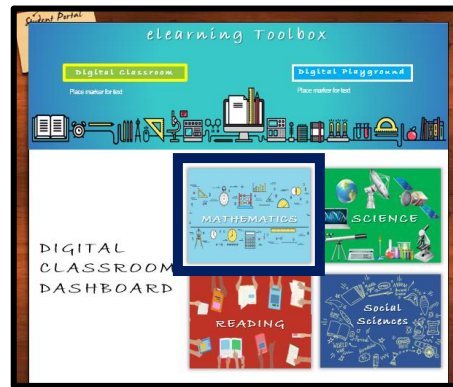


Login to your **Student Portal**

In the **eLearning Toolbox** select the **Digital Classroom**



Click on **Mathematics**



Select **Edgenuity**



If you have one course assigned, you will automatically be logged into Edgenuity and taken to the Student Homepage as shown below. Click on the course name or on the Next Activity button to begin working.

Note: Students will see Announcements shared by district level or school level personnel. Also, the students have access to the Course Report once they are in each of their courses.

If you are assigned to more than one course, you must select one course to work on before entering the Edgenuity platform. Using the dropdown menu, select a course, and then click on Login>> to be taken to the Student Homepage.

Courses: **FSA-Algebra 1 Readiness Course**
FSA-Geometry Readiness Course

Note: Be sure to log off when you are done working.

